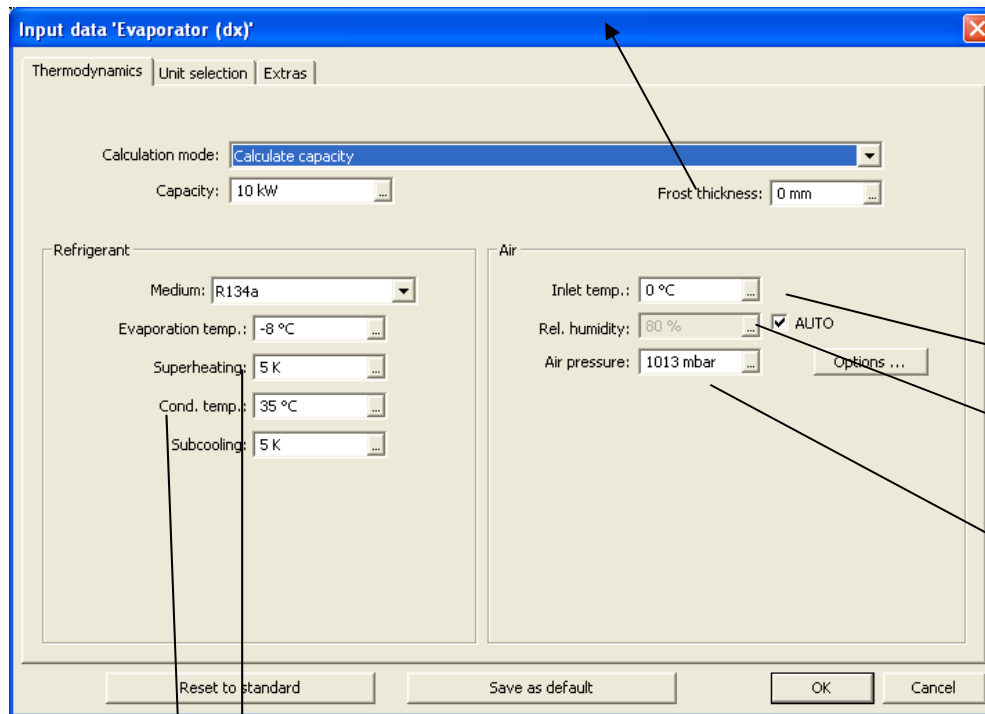


### 3. The GPC is not only for designing new units, but also for recalculating existing ones!

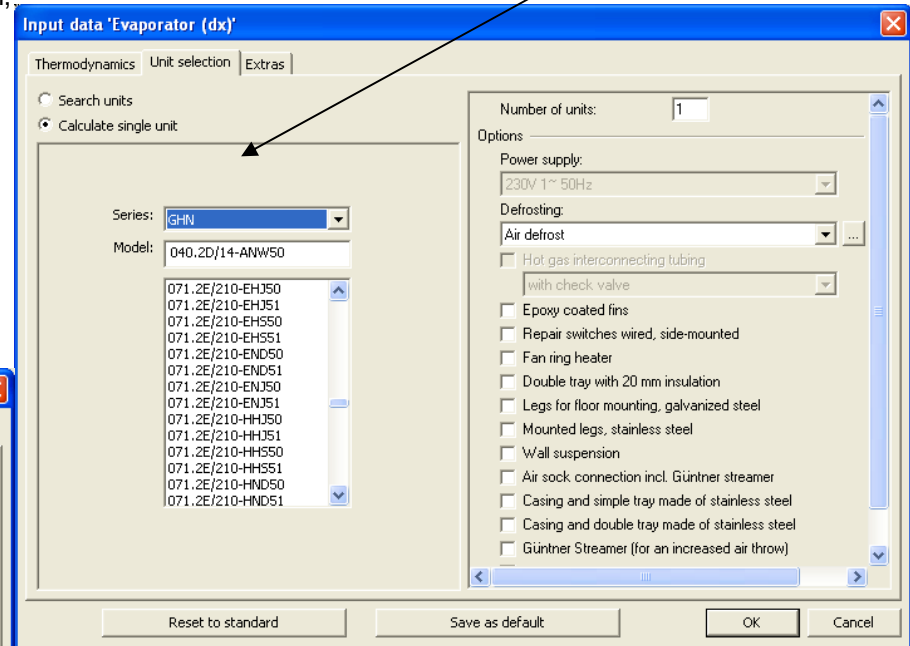
If deviations concerning an existing data sheet occur during the recalculation, please verify the following input parameters, which are all be considered in the **thermodynamic** GPC calculation



Thickness of the insulating frost layer

Superheating depending on the expansion valve

Condensation temperature and subcooling: This data is important for determining the already occurred partial evaporation after the expansion valve, that can have considerable influence bearing on the unit's performance!



Inlet temperature is not equal to "room temperature" = average value of the air temperature in the cooler

Humidity within the room (divided into latent and sensible heat)

Air pressure or geodetic height over NN

Air sock connections and epoxy resin coated fins can not be selected subsequently as accessory, because this would change the unit's performance!!!  
Note: Select all accessories at the beginning!

Number of units: 1

Options

Option	Quantity	Price (EUR)
Defrosting: Hotgas defrost	1 x	301.00
<input checked="" type="checkbox"/> Hot gas interconnecting tubing with check valve	1 x	109.00
<input type="checkbox"/> Epoxy coated fins	1 x	72.00
<input type="checkbox"/> Repair switches wired, side-mounted	1 x	230.00
<input type="checkbox"/> Fan ring heater	1 x	74.00
<input type="checkbox"/> Double tray with 20 mm insulation	1 x	244.00
<input type="checkbox"/> Legs for floor mounting, galvanized steel	4 x	57.25
<input type="checkbox"/> Mounted legs, stainless steel	4 x	119.75
<input type="checkbox"/> Wall suspension	2 x	96.50
<input type="checkbox"/> Air sock connection incl. Güntner streamer	1 x	181.00
<input type="checkbox"/> Casing and simple tray made of stainless steel	1 x	504.00
<input type="checkbox"/> Casing and double tray made of stainless steel	1 x	857.00
<input type="checkbox"/> Güntner Streamer (for an increased air throw)	1 x	54.00
<input type="checkbox"/> Defrost flap	1 x	1094.00
<input type="checkbox"/> Folding fan doors	1 x	204.00
<input type="checkbox"/> Expansion valve incl. mounting	1 x	0.00
<input type="checkbox"/> Extra accessories	1 x	0.00

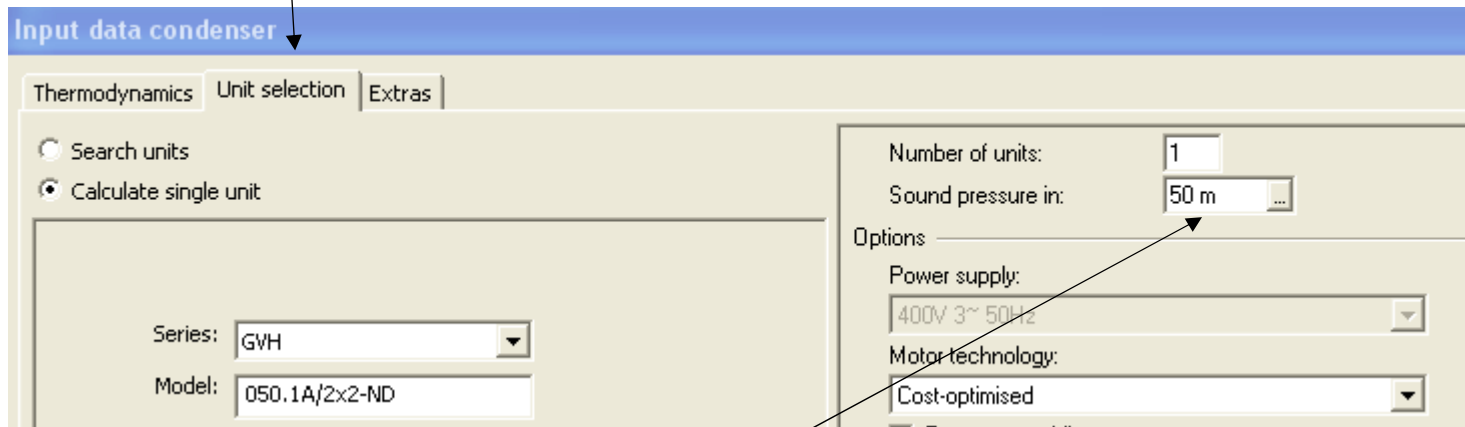
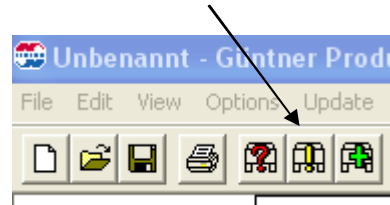
Buttons: OK, Cancel

Epoxy coated fins have an insulating effect, just like a slight frost layer, and consequently reduce heat conduction and performance.

Air sock connection means external pressure, reduced air volume flow, reduced external heat transfer and thus reduced performance.

## Recalculate the sound specifications of the selected unit for another distance:

- Click on the button "calculate" (icon with yellow exclamation mark)
- Click on tab "unit selection"



-Enter desired distance

**Warning: Only for condensers/drycoolers when installed on a reflecting plane in a free field.**

**For evaporators/air coolers, the indication of a sound pressure level of a distance above 3 m does not make any sense, because of the occurring multiple reflection and is therefore not possible!**